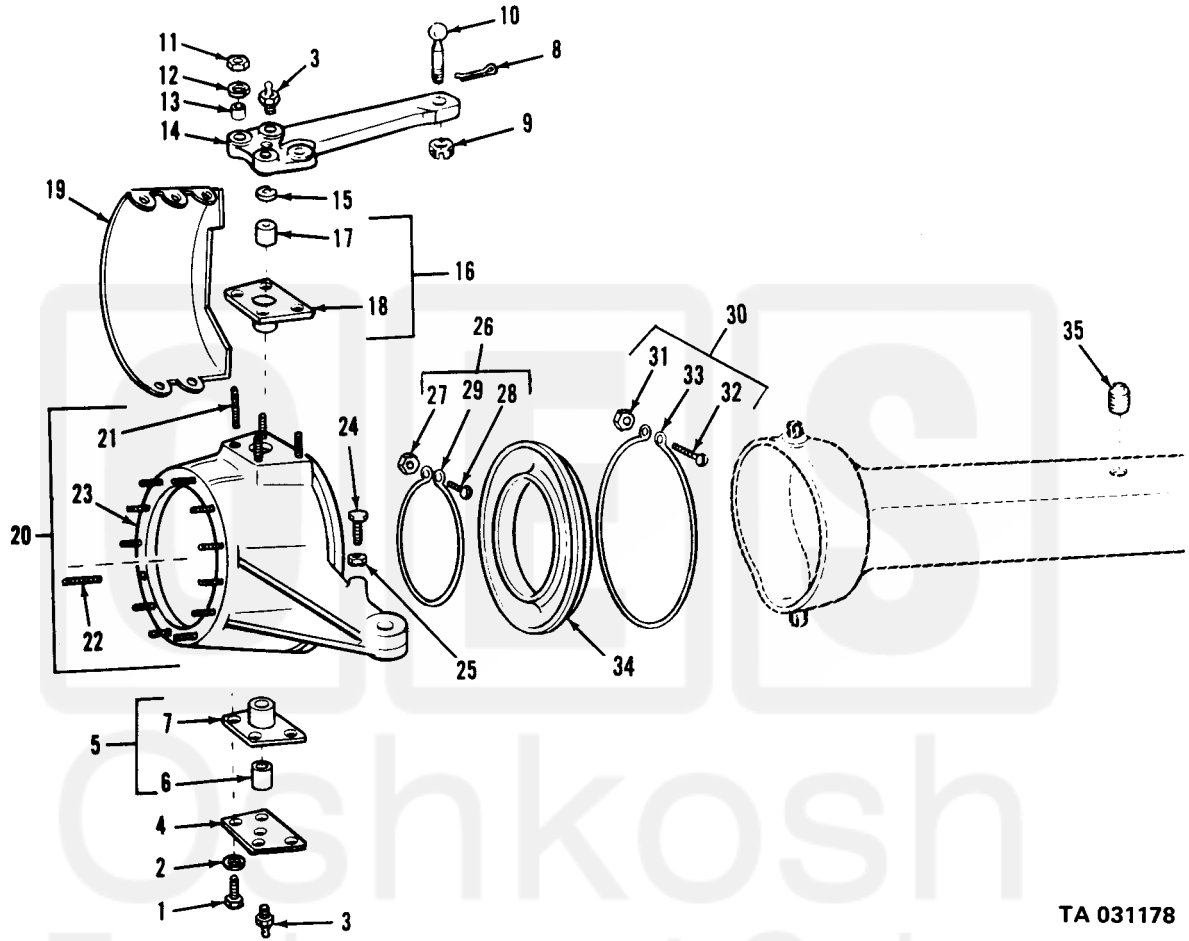


(1)	(2)	(3)	(4)	(5)	(6)	(7)	(8)	
ILLUS.							QTY	
FIG. NO.	ITEM NO.	SMR CODE	NATIONAL STOCK NUMBER	PART NUMBER	FSCM	DESCRIPTION	U/M	INC IN UNIT
						1004-STEERING MECHANISM		
83	1	PAFZZ	5306-00-752-1692	7521692	19207	BOLT,MACHINE:STEERING KNUCKLE FLANGE SLEEVE		
						REST PLATE	EA	12
83	2	PAFZZ	5310-00-167-0680	MS35338-49	96906	WASHER, LOCK	EA	12
83	3	PAOZZ	4730-00-050-4208	MS15003-1	96906	FITTING,LUBRICATION:UPPER AND LOWER SHEAVE	EA	2
83	4	PAFZZ	5340-00-764-8300	7521677	19207	PLATE:STEERING KNUCKLE FLANGE SLEEVE,LOWER(2) AND UPPER(1)	EA	3
83	5	PAFZZ	2530-00-752-1676	7521676	19207	SLEEVE:STEERING KNUCKLE, LOWER,W/BEARING ASSEMBLY	EA	2
83	6	XAFZZ		5283738	19207	BEARING,SLEEVE: STEERING KNUCKLE FLANGE	EA	1
83	7	XAFZZ		7700120	19207	SLEEVE	EA	1
83	8	PAFZZ	5315-00-012-0123	MS24665-355	96906	PIN,COTTER	EA	1
83	9	PAFZZ	5310-00-242-5615	11609581	19207	NUT, CASTELLATED, HEXAGON	EA	1
83	10	PAFZZ	5307-00-516-7504	5167504	19207	STUD,BALL:STEERING ARM	EA	1
83	11	PAFZZ	5310-00-763-8911	MS51968-17	96906	NUT, PLAIN, HEXAGON	EA	4
83	12	PAFZZ	5310-00-627-6128	MS35335-38	96906	WASHER, LOCK	EA	4
83	13	PAFZZ	5365-00-752-1694	7521694	19207	BUSHING,TAPERED:STEERING ARM	EA	4
83	14	PAFZZ	2530-00-312-0886	7521682	19207	ARM:STEERING	EA	1
83	15	XDFZZ		10896717	19207	SPACER SET:STEERING KNUCKLE UPPER BEARING SLEEVE	EA	4
83	16	PAFZZ	2530-00-752-1690	7521690	19207	SLEEVE:UPPER,W/BEARING	EA	2
83	17	XAFZZ		5283738	19207	BEARING,SLEEVE:BUSHING TYPE, STEERING KNUCKLE FLANGE	EA	1
83	18	XAFZZ		7700121	19207	SLEEVE	EA	1
83	19	PAFZZ	2530-00-752-1678	7521678	19207	GUARD:STEERING KNUCKLE BOOT	EA	2
83	20	PAFZZ	2530-00-752-1687	7521687	19207	KNUCKLE AND STUD:STEERING, LEFT,W/STUDS(COMPONENTS SAME AS KNUCKLE AND STUD, NSN2530-00-752-1688, EXCEPT WHERE INDIVIDUAL COMPONENTS ARE ANNOTATED)	EA	1
83	20	PAFZZ	2530-00-752-1688	7521688	19207	KNUCKLE AND STUD:STEERING, RIGHT,W/STUDS	EA	1
83	21	PAFZZ	5307-00-752-1689	7521689	19207	STUD,PLATE:STEERING ARM	EA	4
83	22	PAFZZ	5307-00-463-4558	10896705	19207	STUD,PLAIN:KNUCKLE TO SWINDLE	EA	12



TA 031178

Figure 83. Front steering.